



CELEBRATING 10 YEARS 2014-2024

Publication #147. OFSC free services and communications are received by thousands in Oakland and the East Bay. We are only able to continue doing this with the help of supportive donors like you. **SUPPORT**

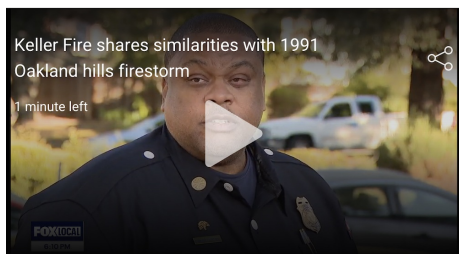
[View in browser](#)

KELLER FIRE – TAKEAWAY REMINDERS

Response to the recent Keller Fire was an AWESOME effort by the Oakland Fire and Police Departments and many mutual aid agencies!

It is remarkable that there were no major injuries and only a couple of structures damaged in 15 acres. The fire was quickly attacked and brought under control using techniques and lessons learned from the 1991 Tunnel Fire and the many wildfires since then, including air support and fire fighting collaboration with CAL FIRE, Alameda County Fire, EBRPD Fire and numerous other local partners, all contributing to extinguishing the blaze while affected residents were being evacuated.

Keller Fire shares similarities with 1991 Oakland hills firestorm



"Very similar situations, very heavy winds, red flag day," said Oakland Fire Chief Damon Covington. "It jumped from the freeway to the home, and then into the eucalyptus, so there are definitely some similarities to the 1991 fire. One of the biggest differences, though, is that we have

pre-prepared for days like this."

~ excerpted from **ARTICLE** (with video) by Betty Yu, KTVU, 10/19/24

The Keller Fire was a stark reminder of the imminent danger of wildfires in Oakland. Thankfully, at that time and in that area the winds were lighter than

anticipated or else it could have been much worse. While there are **many things individuals and communities can do to be better prepared** for future wildfire incidents, we'd like to focus on the following 3 relatively quick and easy actions:

1) Vote for Vegetation Management – Measure MM



VOTE YES ON MEASURE MM, IT WILL HELP:

- Implementing the Vegetation Management Plan to **clear hazardous vegetation**.
- **Increasing fire patrols** during high-risk conditions, such as Red Flag Days.

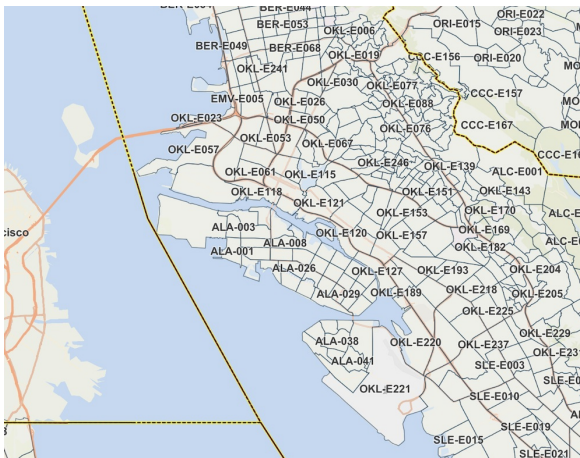
As vegetation dries out and winds get stronger, wildfires become an increasing threat to our community. By decreasing the fuel load on city properties, **Measure MM helps our fire fighters** to contain the fires before they get out of control.

LEARN MORE / GET INVOLVED

Oakland's hillside neighborhoods are particularly vulnerable as Red Flag Warnings become the "new normal."

Measure MM will ensure that fire prevention has dedicated funding that cannot be diverted.

2) Know Your Evacuation Zone – Be Ready To GO



There are a number of reasons why residents of Oakland might be encouraged or ordered to evacuate. Perhaps the most obvious is due to approaching wildfire, but maybe not so apparent are other instances such as a ruptured gas line, chemical hazard, or rising floodwaters.

Genasys Protect, is a commercial software application designed to help first responders

manage evacuations in an emergency such as a wildfire or flood. It also helps inform communities of these threats, and when and how to evacuate, shelter-in-place and return.

Zones are used to specify which areas are to evacuate, shelter-in-place, return home, etc. **Everyone in Oakland should know their zone name.**

>> **FIND MY ZONE** <<

MEMORIZE your zone name, WRITE IT DOWN and put it in a visible location, such as taped to the inside of your front door. Also know your zone for where

3) Park Like Your Life Depends On It

Please,

Park Like Your Life Depends on It

These streets are narrow and twisting.

Neighbors are concerned that parked cars will block fire trucks and ambulances on their way to an emergency - maybe even at your house.

Please, be aware of how and where you park:



Don't impede emergency vehicle access - **a 20-foot minimum clearance** - is required by the City Fire Code.



Don't create danger for drivers approaching blind curves

On behalf of caring members in the community, we ask that vehicles be parked with this in mind.



Did you know that a fire engine should have a road width of 20 FEET to assure access in an emergency? Many streets in our area aren't 20 feet wide, and vehicles parked along the side reduce that width even further. So when you're parking be sure to leave room for emergency vehicles. It could be YOUR life at stake.

Are you parking safely for yourself, neighbors and first responders? Visit our **Parking Awareness Program** which includes a downloadable PDF of the pictured Parking Windshield Flyer.

NEED MORE CONVINCING?

Take a look at this **home video** by Janice Gatlin and imagine YOUR family is waiting while the fire engines thread the needle through parked cars.

READY FOR MORE?

KUDOS for taking the above steps and any others you might have already checked off the list!

Please take a moment to review (and share!) OFSC's

WILDFIRE SAFETY PROGRAMS



Oakland Firesafe Council (OFSC) is a 501(c)(3) non-profit organization dedicated to reducing the risks of wildfire danger to people and property through preparedness education, programs and materials, outreach, advocacy and volunteer opportunities.
CONTACT

THANK YOU for all that you have done so far in supporting OFSC's work and thank

you for ANY donation you are able to make now.

SUPPORT

Oakland Firesafe Council is a 501(c)(3) non-profit. Donations are tax-deductible.

(510) 575-0916



Oakland Firesafe Council | 6114 La Salle Avenue Suite 462 | Oakland, CA 94611 US

[Unsubscribe](#) | [Constant Contact Data Notice](#)



Try email marketing for free today!