



Alameda County Fire Department

Presents



Hours of Operation
Mon - Fri
8AM - 5PM
Administrative Offices
In Case of Emergency Call 911
Administrative Offices Closed Daily
Between 12pm - 1pm



ADMINISTRATIVE
SERVICES

Dedicated to Superior Service

ALAMEDA COUNTY
FIRE
7400
07530



Alameda County Fire Department

Service area of 508 square miles

Unincorporated County (exclusive of the Fairview area)

City of Dublin

City of Emeryville

City of Newark

City of San Leandro

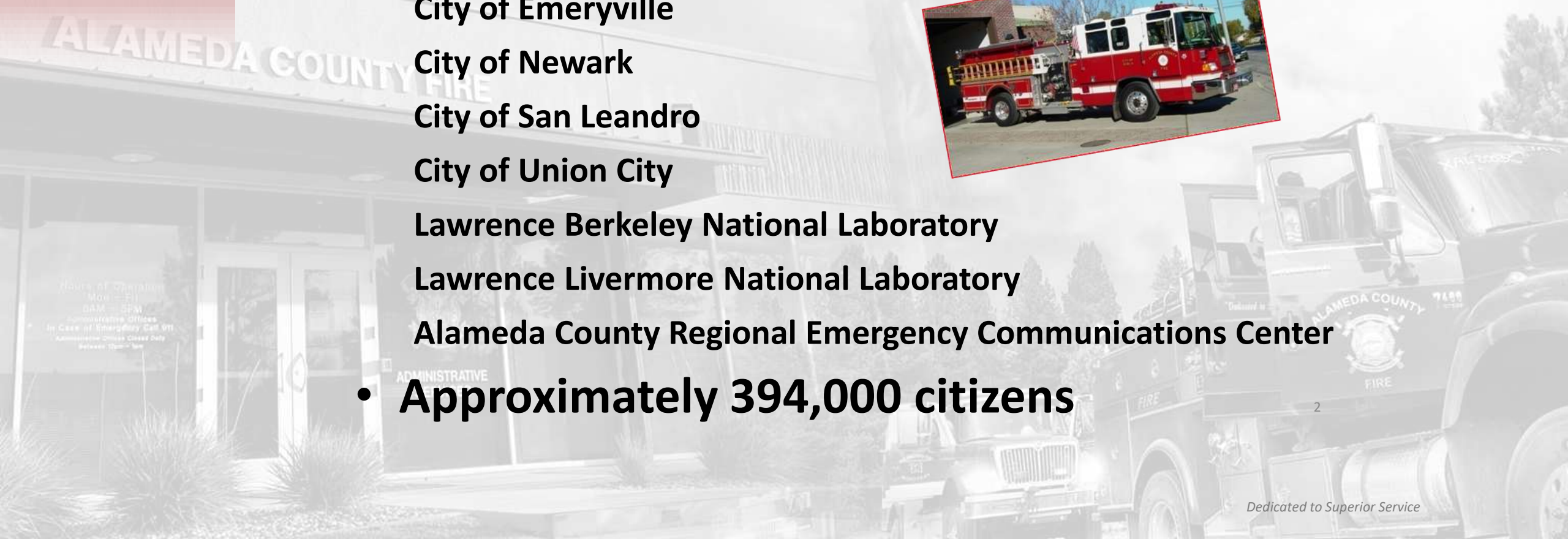
City of Union City

Lawrence Berkeley National Laboratory

Lawrence Livermore National Laboratory

Alameda County Regional Emergency Communications Center

- **Approximately 394,000 citizens**





About the Defensible Space Program

Program Objective:

- To provide community members with the tools and resources they need to be better equipped to prevent and reduce the impacts of wildland fire in the urban interface

Program Goal:

- To train communities in high and very high fire severity zones how to maintain defensible space year round



Wildland Urban Interface Landscape History and Overview

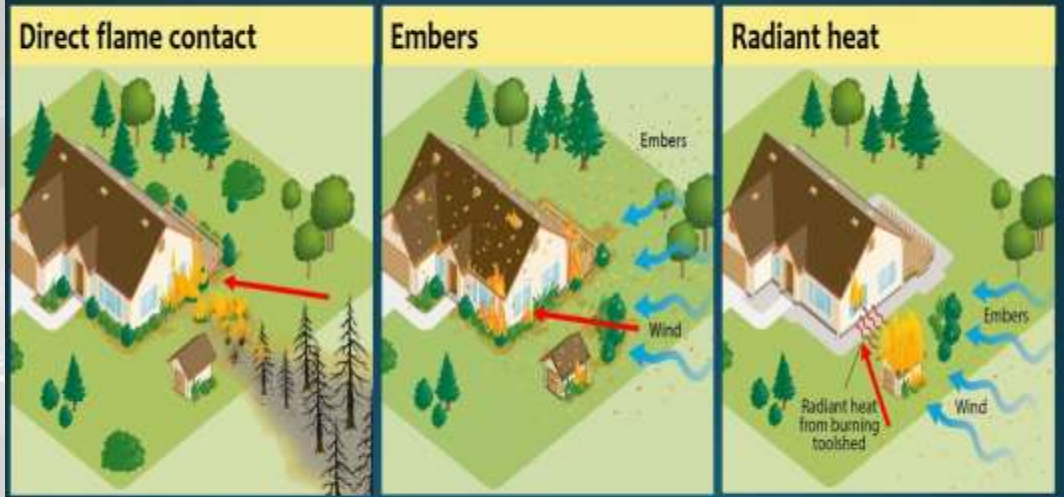




How Fire Moves

- Radiant Heat, Embers, Direct Flame
- Most of the homes lost in the WUI are from ember storms
- Defensible Space can help interrupt all three types of fire exposures

Three types of fire exposures



- Defensible space strategies have focused on how to reduce direct flame contact.
- Preparing for embers and radiant heat exposures takes a different approach.





Wildland Fire Behavior

- Fuel - Vegetation, Combustible Materials, Structures
- Topography – Slope, aspect, geographic features
- Weather – Relative humidity, wind speed & direction, temperature
- Of the above components which one do we have control over or the ability to influence directly?



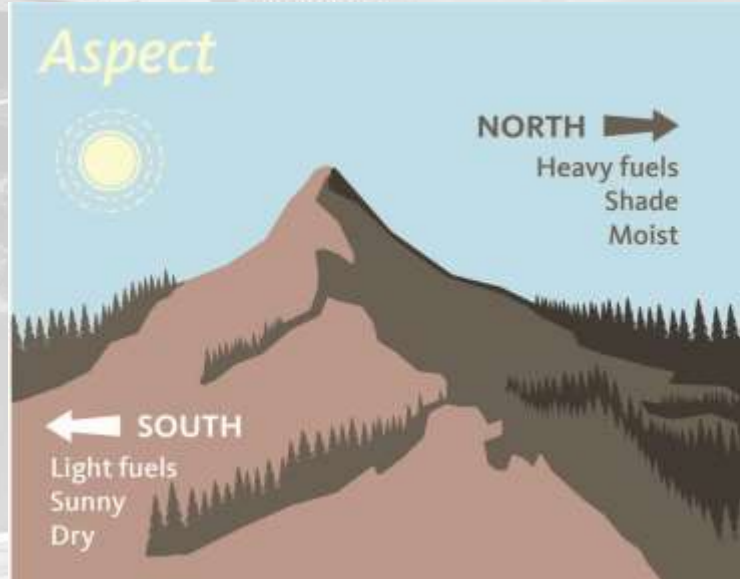
Fuel





Topography

- Topography changes the preheating of fuels. Most of the heat from a fire transfers vertically or rises up. The steeper the slope, the more efficient fuels in front of the fire are preheated as heat rises upslope. This is why fires occurring in the same kind of fuel move faster going up a steep slope than on flat ground.
- Valleys
- Slope Direction





Weather

- **Red Flag Days** = Low humidity combined with high winds will result in a Red Flag Warning from the National Weather Service

Alameda County Fire Department

Fire Weather Watch

A Fire Weather Watch alerts land managers and the public that upcoming weather conditions could result in extensive wildland fire occurrence or extreme fire behavior.

A watch means critical fire weather conditions are possible but not imminent or occurring.

Be prepared.

Red Flag Warning

The National Weather Service issues a Red Flag Warning, in conjunction with land management agencies to alert people to an ongoing or expected critical fire weather pattern.

Critical fire weather conditions are either occurring now or will shortly. Be extremely careful with open flames.

Take action.

[readyforwildfire.org](#)

NATIONAL WEATHER SERVICE

RED FLAG WARNING

Published: October 20, 2020

Valid: 10 PM PDT Wednesday 10/21 through 08 AM PDT Friday 10/23

- North Bay Mountains, East Bay Hills and Interior Valleys, Santa Cruz Mountains, and the San Mateo County Coast
- Wednesday 10/21 10 PM PDT through Friday 10/23 08 AM PDT
- Mountains and Ridges: NNE winds 10-25 mph, gusts up to 40 mph.
- Valleys: NNE winds 10-20 mph, gusts up to 35 mph
- Coast: NNE winds 15 to 20 mph, gusts up to 40 mph
- Dry Conditions make for easier fire starts
- Potential for rapid spread of fire

Begins at 1AM PDT Thursday for Santa Cruz Mountains and San Mateo Coast

Hazards

Red Flag Warning

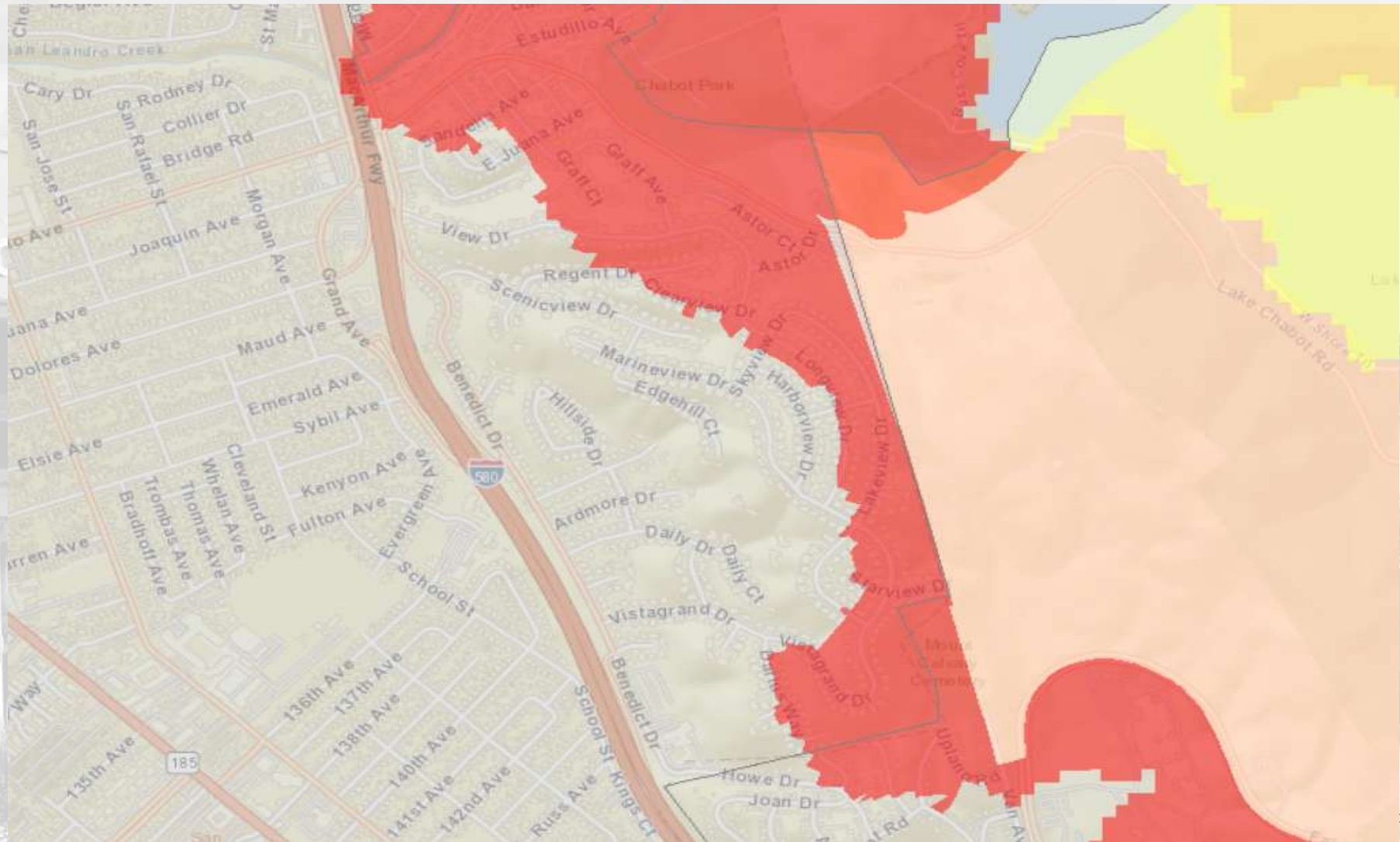
San Francisco Bay Area/Monterey
weather.gov/bayarea

NWSBayArea



High and Very High Fire Severity Zones

<https://egis.fire.ca.gov/FHSZ/>





What is Defensible Space?



Hours of Operation
Mon - Fri
6AM - 5PM
Administrative Offices
In Case of Emergency Call 911
Administrative Offices Closed Daily
Between 10pm - 7am



Zone 1 (0-30 Feet)

- Remove all dead and dying material from roof and ground, remove branches within 10 feet of chimney, separate vegetation, no wood piles, and clear combustibles from under decks.
- Most common violation = separate vegetation





Zone 2 (30-100 feet)

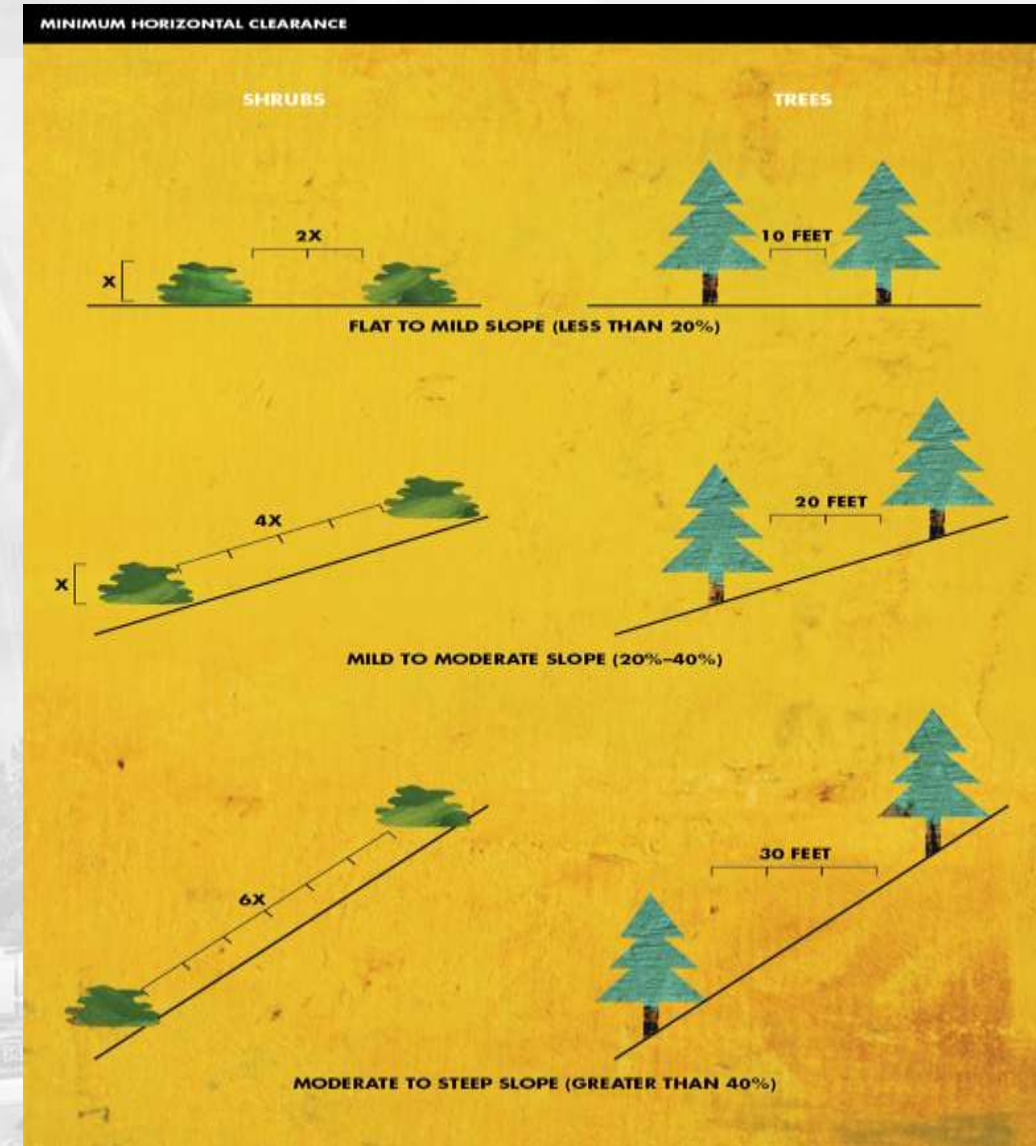
- Cut annual grasses and forbs maximum 4 inches of height
- Limb trees up 6 feet from ground and eliminate ladder fuels
- Remove all dead and dying woody surface fuels. Loose surface litter maximum depth of three inches.
- Most common violation = ladder fuels and tree limbing





Zone 2 (30-100 feet)

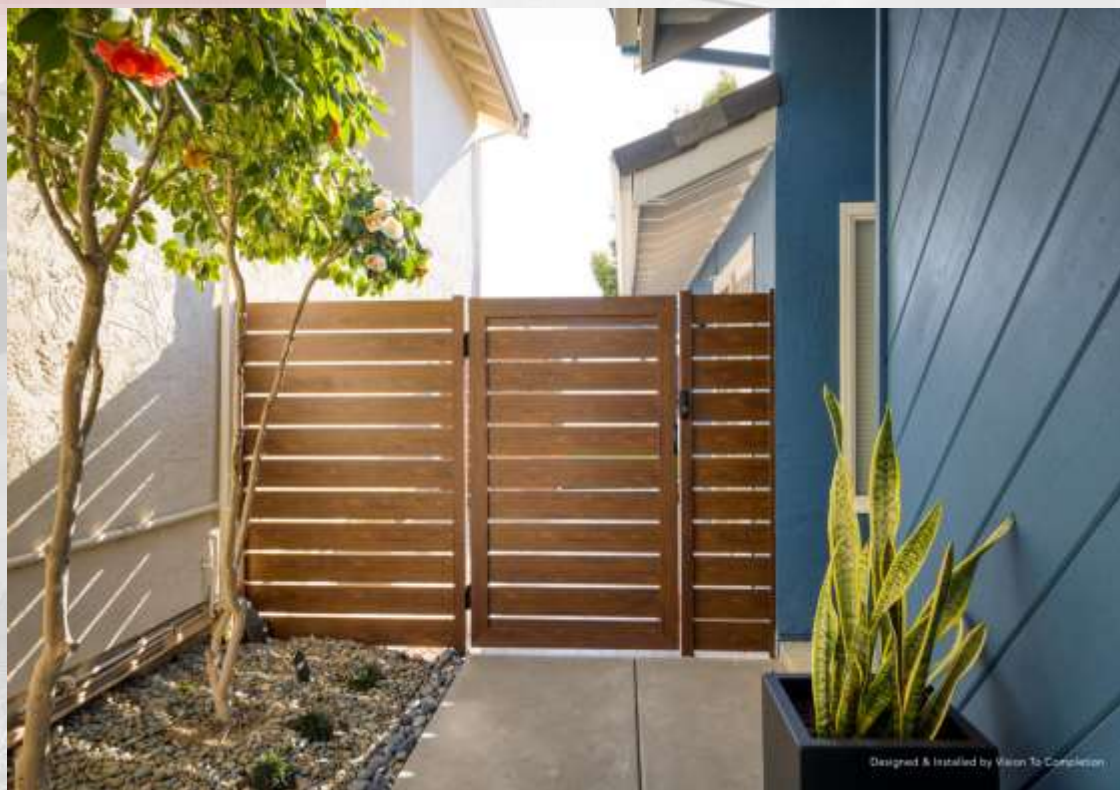
- Ladder Fuels and Slope Considerations





Recommendations

- Changing material of fences can reduce fuels





Zone 0 Coming Soon to New & Existing Construction



A firefighter works to put out spot fires from embers
Source: LA Times



Alert and Notification

Sign up for



www.acalert.org



To receive alerts from your local agency
Text your zip code to 888777



Evacuation & Know Your Zone Genasys Protect

- In order to understand whether your area is under an evacuation warning or order, it's important to Know Your Zone.



1. Go to <https://protect.genasys.com>
2. Type your address into the search bar and hit enter.
3. Find your zone in the pop-up window and write it down.
4. Click Subscribe to Alerts to register for AC Alert or go to www.acalert.org.